



EUREKA
FLOOR CLEANING MACHINES



made in Italy



SWEeper LINE

XTREMA

A WHOLE NEW DIMENSION TO SWEEPING POWER

INDUSTRIAL RIDE-ON SWEEPER



MULTIPOCKET FILTER



MULTIBRISTLE

XTREMA

INDUSTRIAL RIDE-ON SWEEPER

High performance and maneuverability.

With a 1.400 mm cleaning path and a top speed of 9 km/h, the Xtrema sweeper is extremely productive, offers high visibility from the driver's seat, and has a compact turning radius of just 1.600 mm.

With an hourly performance rate of up to 12.600 m²/h, the Xtrema is highly productive in both congested or large areas, or where there are steep gradients.

The machine is available in 2 versions:

- EB version, battery powered, perfect for both exterior and interior spaces, zero emissions.
- HDK version, with Kubota engine. The traction, hopper lifting system, brushes and fan are all hydraulically controlled giving the Xtrema unbeatable speed and sweeping quality.

The Eureka Xtrema is ideal to quickly clean medium to large areas. Its key features are the high dump hopper, ability to work on gradients of 20%, compact design and high visibility from the driver's seat.

DEBRIS CONTAINER



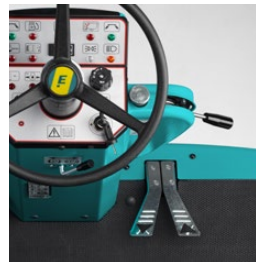
The debris container has a multilevel high dump and is fitted with a hydraulically controlled door. The hopper is fitted in the rear part of the machine and has a 150 L capacity, it can be hydraulically raised to a maximum height of 1350 mm.

CONTROL PANEL



The controls, ergonomic and intuitive, allow the operator to proceed without uncertainty, therefore ensuring full concentration is maintained on the job in hand.

TRACTION



The Xtrema has a powerful traction system and a top speed of 9 Km/h, this is controlled by a double pedal (forward and reverse directions).

SAFETY



For maximum safety and comfort of the operator the Xtrema is available with a number of accessories: Complete light kit, reverse beeper, overhead guard, flashing light (standard in EU), Class M bag filter.

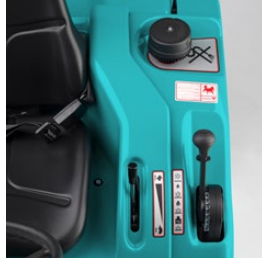
FEATURES

- Rear hopper with hydraulic lift;
- Tool free brush changes;
- Side brush shock absorption system;
- Side panels open completely for easy access;
- Protective steel bumpers;
- Class L, polyester bag filter;
- Electric filter cleaning system;
- Front headlights;
- Vortex prefilter on engine air intake (HDK version);
- Super elastic, non-marking tyres;



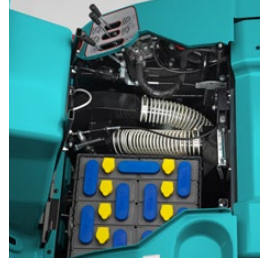
BRUSH PRESSURE

The main brush pressure can be adjusted during operation via a control lever, conveniently positioned next to the driver's seat.



EB VERSION

The Xtrema is also available in battery version, recommended for sweeping interior surfaces.



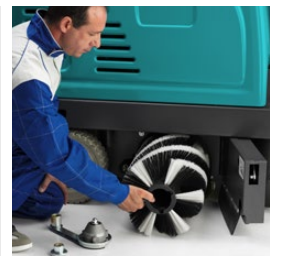
SIDE BRUSH

Activated from the main control panel, the side brush enables effective cleaning along edges, under objects and in hard to reach areas. The brush support is shock resistant and therefore stands up to accidental impact.



MULTIBRISTLE MAIN BRUSH

The MultiBristle main brush, with rows of diversified bristles, guarantees effective cleaning on any type of floor with any type of dirt. The SharkCap antijam brush protection system prevents the brush and bearings from being damaged by strands.



MULTIPOCKET FILTER



With an innovative structure, large filtering area and up to 99.9% filtration efficiency, the Multipocket Filter delivers clean air back into the environment and guarantees filter performance that lasts over time. The filter is also washable, resistant to water and oil, self-cleaning and easy to maintain.



VERSIONS

XTREMA HDK - with a 2-cylinder, liquid cooled Kubota diesel engine
XTREMA EB - 24V battery

APPLICATIONS

Industrial sites, schools, offices, religious buildings, hospitals, public buildings, airports, ports, shopping centers, logistics centers and contract cleaners.

SURFACES

Ceramics, marble, cement, concrete, linoleum, non-slip surfaces, tiles.

	XTREMA EB	XTREMA HDK
CLEANING PATH with 2 side brushes	1.400 mm	1.400 mm
CLEANING PATH with main brush	800 mm	800 mm
HOURLY PERFORMANCE	11.200 m ² /h	12.600 m ² /h
FORWARD SPEED	8 km/h	9 km/h
DIRT CONTAINER VOLUME	150 kg	150 kg
FILTER TYPE	Eureka Multipocket Filter	Eureka Multipocket Filter
TRACTION MOTOR	electronic - 900 W	hydraulic
PRIMARY MOTOR	2.000 W	Kubota 16,8 hp
POWER SUPPLY	24 V	-
WEIGHT	920 kg - inclusive of battery	790 kg
DIMENSIONS with 2 side brushes (lxwxh)	1.695 x 1.400 x 1.480 mm	1.695 x 1.400 x 1.480 mm

PLUS



MULTIPOCKET FILTER



MULTIBRISTLE

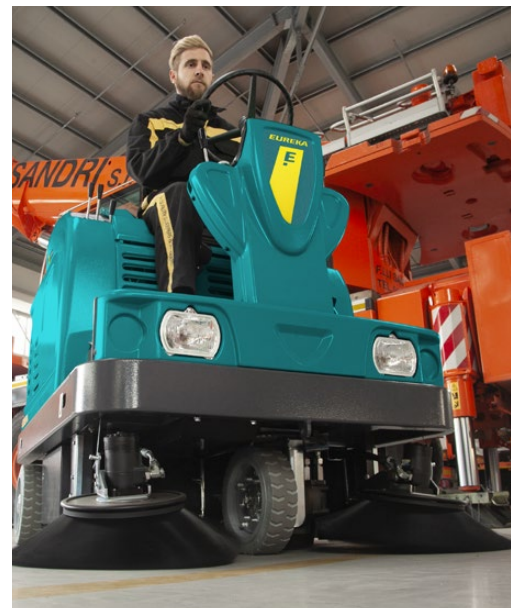


QUICK-CHANGE SYSTEM



SHARKCAP

HYDRAULIC DIRT CONTAINER WITH MULTILEVEL HIGH DUMP SYSTEM / ADJUSTABLE BRUSH PRESSURE FROM DRIVER'S SEAT / AUTOMATIC FILTER CLEANING SYSTEM / FLOATING MAIN BRUSH WITH CHEVRON BRISTLE PATTERN / DOUBLE SIDE BRUSH / FRONT FLAP LIFTS TO PICK UP BULKY DEBRIS / ERGONOMIC CONTROLS / STEEL DIRT CONTAINERS / WET SWEEP FILTER BYPASS SYSTEM / STEEL OVERHEAD GUARD



EUREKA S.p.A. UNIPERSONALE
VIALE DELL'ARTIGIANATO N. 30/32 35013 CITTADELLA (PD) ITALY
TEL +39 049 9481800 - FAX +39 049 9481899
INFO@EUREKASWEEPERS.COM WWW.EUREKASWEEPERS.COM

